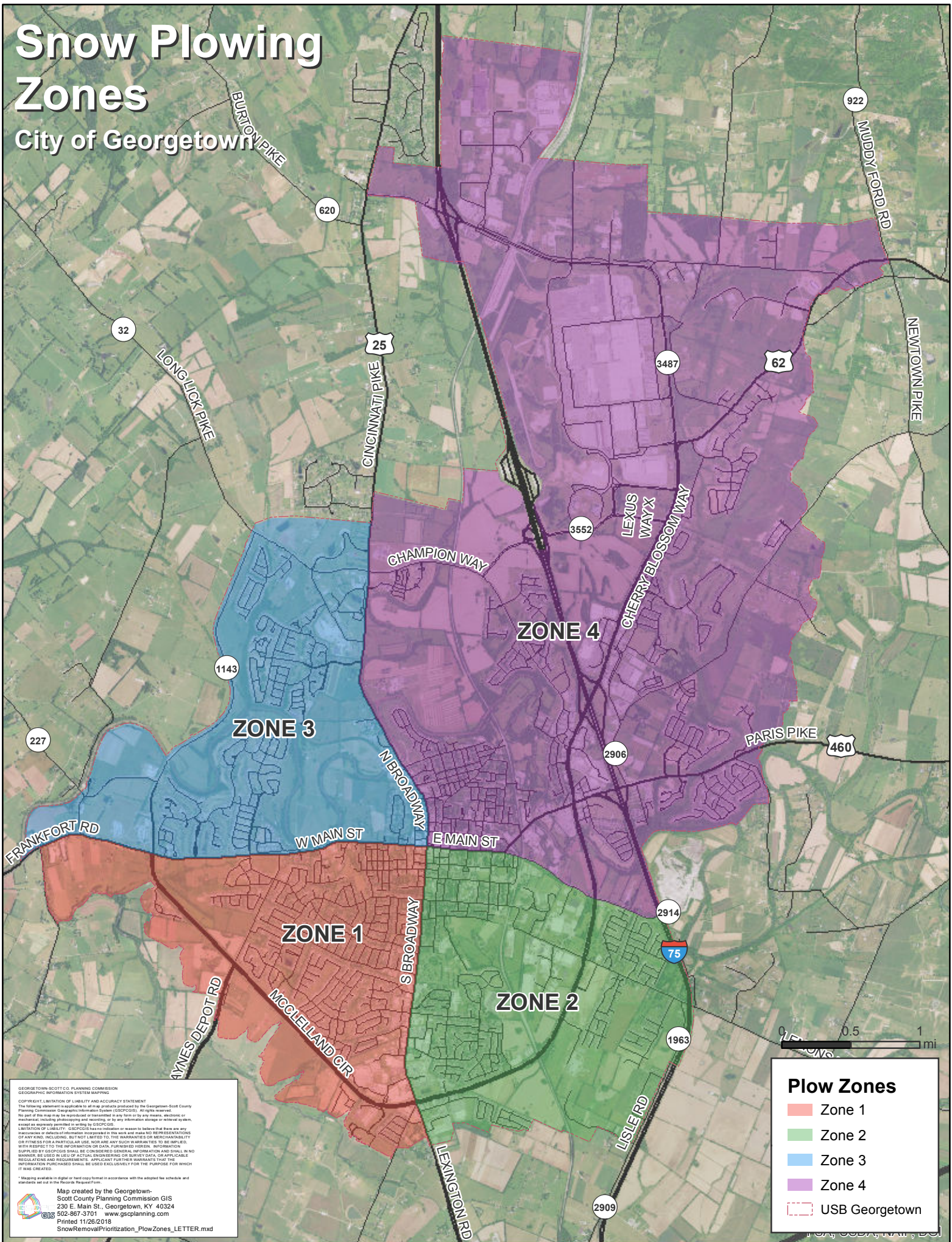


# Snow Plowing Zones

## City of Georgetown



GEORGETOWN, SCOTT CO., PLANNING COMMISSION  
 GEOGRAPHIC INFORMATION SYSTEMS SUPPORT

**COPYRIGHT, LIMITATION OF LIABILITY AND ACCURACY STATEMENT**  
 The following statement is applicable to all maps produced by the Georgetown-Scott County Planning Commission Geographic Information System (GIS/CGIS). All rights reserved. No part of this map may be reproduced or transmitted in any form or by any means, electronic or mechanical, including photocopying and recording, or by any information storage or retrieval system, except as expressly permitted in writing by GIS/CGIS.

**LIMITATION OF LIABILITY** GIS/CGIS has no intention or reason to believe that there are any inaccuracies or defects of information incorporated in this work and makes NO REPRESENTATION OF ANY KIND, INCLUDING, BUT NOT LIMITED TO, THE WARRANTIES OF MERCHANTABILITY OR FITNESS FOR A PARTICULAR USE, NOR ARE ANY SUCH WARRANTIES TO BE IMPLIED WITH RESPECT TO THE INFORMATION OR DATA FURNISHED HEREIN. INFORMATION SUPPLIED BY GIS/CGIS SHALL BE CONSIDERED GENERAL INFORMATION AND SHALL BE USED IN A MANNER BEING USED IN USE OF ACTUAL ENGINEERING OR SURVEY DATA OR APPLICABLE REGULATIONS AND REQUIREMENTS. APPLICANT'S FURTHER WARRANTIES THAT THE INFORMATION PURCHASED SHALL BE USED EXCLUSIVELY FOR THE PURPOSE FOR WHICH IT WAS CREATED.

1 Mapping available in digital or hard copy format in accordance with the adopted fee schedule and standards set out in the Records Request Form.

Map created by the Georgetown-Scott County Planning Commission  
 230 E. Main St., Georgetown, KY 40324  
 502-867-3701 www.gsplanning.com  
 Printed 11/26/2018  
 SnowRemovalPrioritization\_PlowZones\_LETTER.mxd

**Plow Zones**

- Zone 1
- Zone 2
- Zone 3
- Zone 4
- USB Georgetown